



SOUTHTREE
COMMERCIAL
REAL ESTATE

FOR LEASE

500 WESTPARK DRIVE, PEACHTREE CITY, GA 30269

OFFICE SPACE | COMMERCE CENTER



PROPERTY DETAILS

- Available Suites:
 - 3,609 RSF on 2nd Floor
 - 2,202 - 4,610 RSF on 3rd Floor
- Located in Westpark Office and Commercial Center in Peachtree City
- Walking distance to hotels, restaurants, banks, daycare, and fitness facilities
- Convenient access to SR 54, SR 74, and I-85
- Newly renovated common areas
- Lease Rate: Inquire

THIS INFORMATION HAS BEEN SECURED FROM SOURCES WE DEEM RELIABLE, BUT WE MAKE NO REPRESENTATIONS OR WARRANTIES, EXPRESSED OR IMPLIED AS TO THE ACCURACY OF THE INFORMATION.

STCOM.US

770-631-0499

201 PROSPECT PARK, SUITE A,
PEACHTREE CITY, GA 30269

BARRY GARNER

VICE PRESIDENT

770-294-4027

BGARNER@STCOM.US

SEAN RAWSON

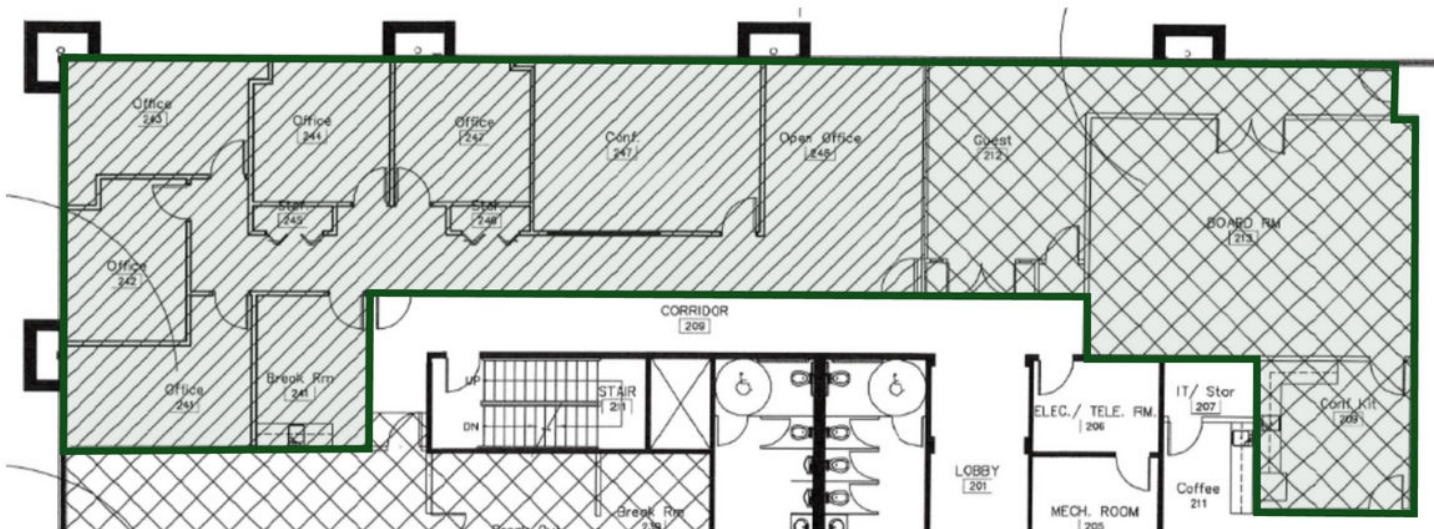
VICE PRESIDENT

678-920-1222-

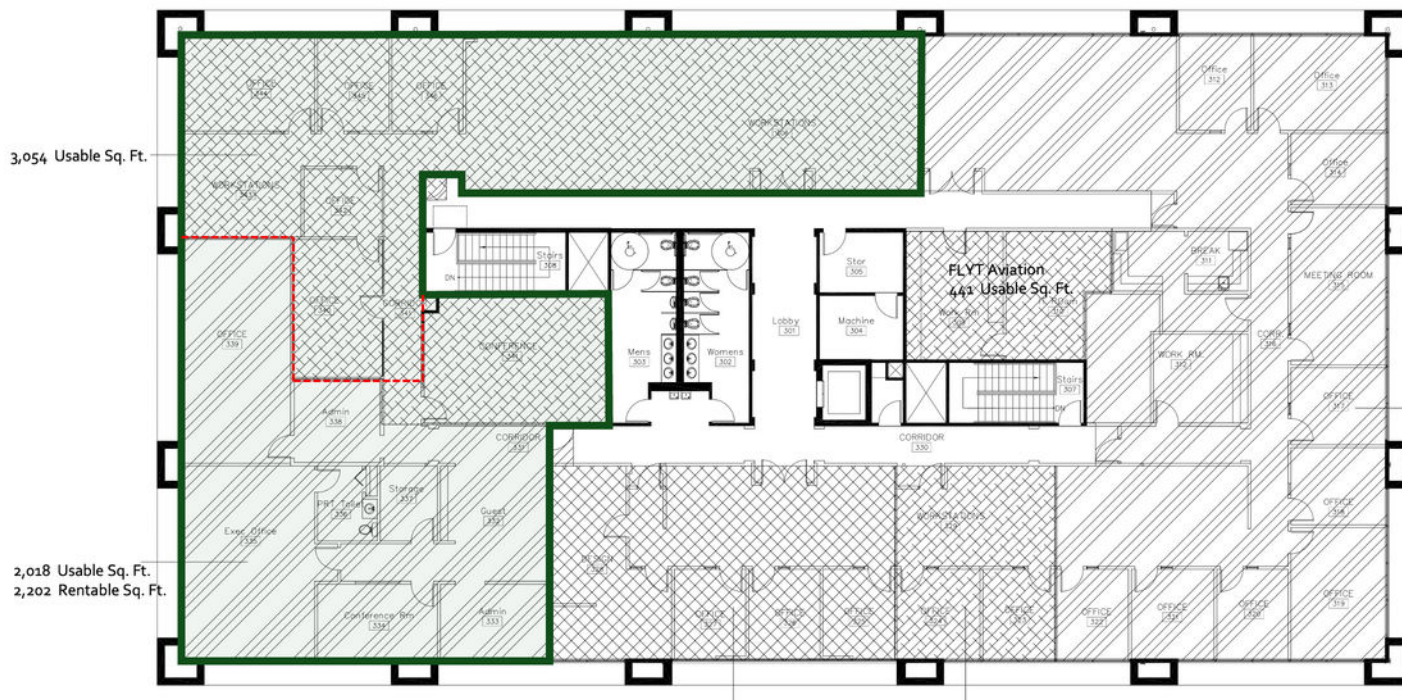
SRAWSON@STCOM.US



2ND FLOOR SUITE



3RD FLOOR SUITE





SOUTHTREE
COMMERCIAL

REAL ESTATE

PHOTOS & MAP

500 WESTPARK DRIVE, PEACHTREE CITY, GA 30269

