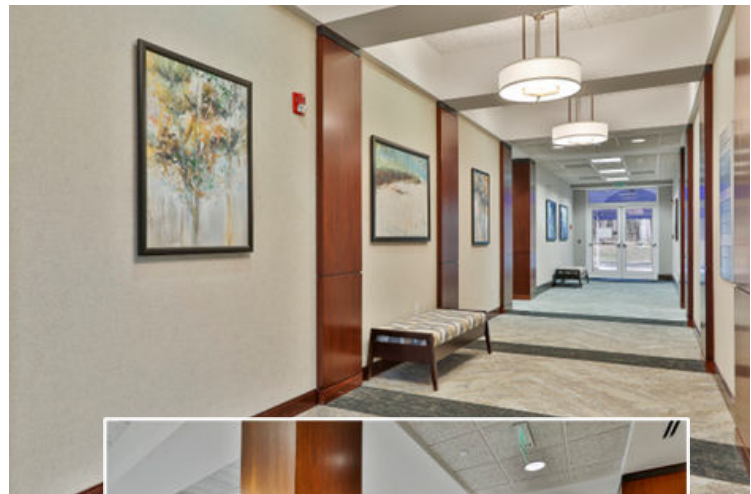




Property Details

- Available Suites: 3,609 & 5,000+/- RSF
- Full Floor Opportunity Available
- Located in Westpark Office and Commercial Center in Peachtree City
- Walking distance to hotels, restaurants, banks, daycare, and fitness facilities
- Convenient access to SR 54, SR 74, and I-85
- Comcast Fiber and AT&T Fiber
- Newly renovated common areas
- Lease Rate: Inquire



THIS INFORMATION HAS BEEN SECURED FROM SOURCES WE DEEM RELIABLE, BUT WE MAKE NO REPRESENTATIONS OR WARRANTIES, EXPRESSED OR IMPLIED AS TO THE ACCURACY OF THE INFORMATION.

 STCOM.US

 770-631-0499

 201 PROSPECT PARK, SUITE A,
PEACHTREE CITY, GA 30269

BARRY GARNER
COMMERCIAL AGENT
770-294-4027
BGARNER@STCOM.US

PAUL SCHWINNE, CCIM
BROKER
678-296-1588
PSCHWINNE@STCOM.US

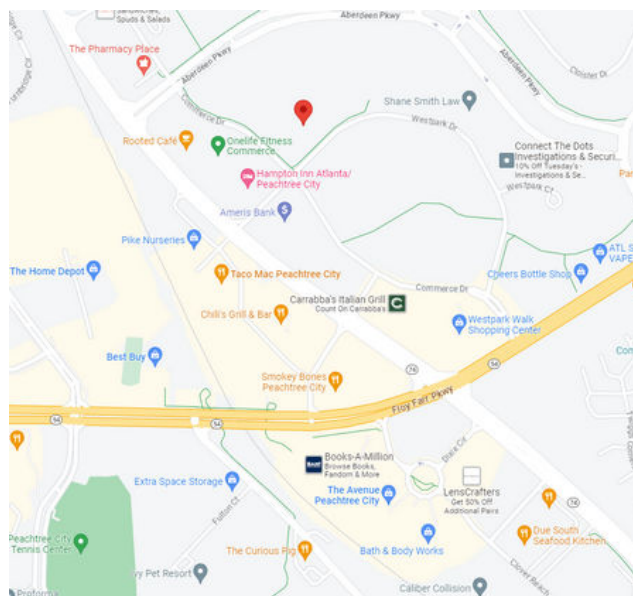


SOUTHTREE
COMMERCIAL

REAL ESTATE

PHOTOS & MAP

500 WESTPARK DRIVE, PEACHTREE CITY, GA 30269



THIS INFORMATION HAS BEEN SECURED FROM
SOURCES WE DEEM RELIABLE, BUT WE MAKE NO
REPRESENTATIONS OR WARRANTIES, EXPRESSED OR
IMPLIED AS TO THE ACCURACY OF THE
INFORMATION.



STCOM.US



770-631-0499



201 PROSPECT PARK, SUITE A,
PEACHTREE CITY, GA 30269

BARRY GARNER

COMMERCIAL AGENT

770-294-4027

BGARNER@STCOM.US

PAUL SCHWINNE, CCIM

BROKER

678-296-1588

PSCHWINNE@STCOM.US