

FOR SALE

510 Stevens Entry, Peachtree City, GA 30269

Tract B: 1.24 Acres | Professional Office Pad Site



Tract B: 1.24 Acres



PROPERTY DETAILS

- Pad Ready Site
- 1.24 +/- Acres
- All Utilities Available
- Master Detention
- Monument Signage
- 29 Dedicated Parking Spaces
- Golf Cart Accessible
- Price: \$249,000

Office: 770-631-0499

Web: stcom.us

This information has been secured from sources we deem reliable, but we make no representations or warranties, expressed or implied as to the accuracy of the information.



SOUTHTREE
COMMERCIAL

REAL ESTATE

Paul Schwinne, CCIM

Broker

678-296-1588

pschwinne@stcom.us

David A. Strickland

Associate Broker

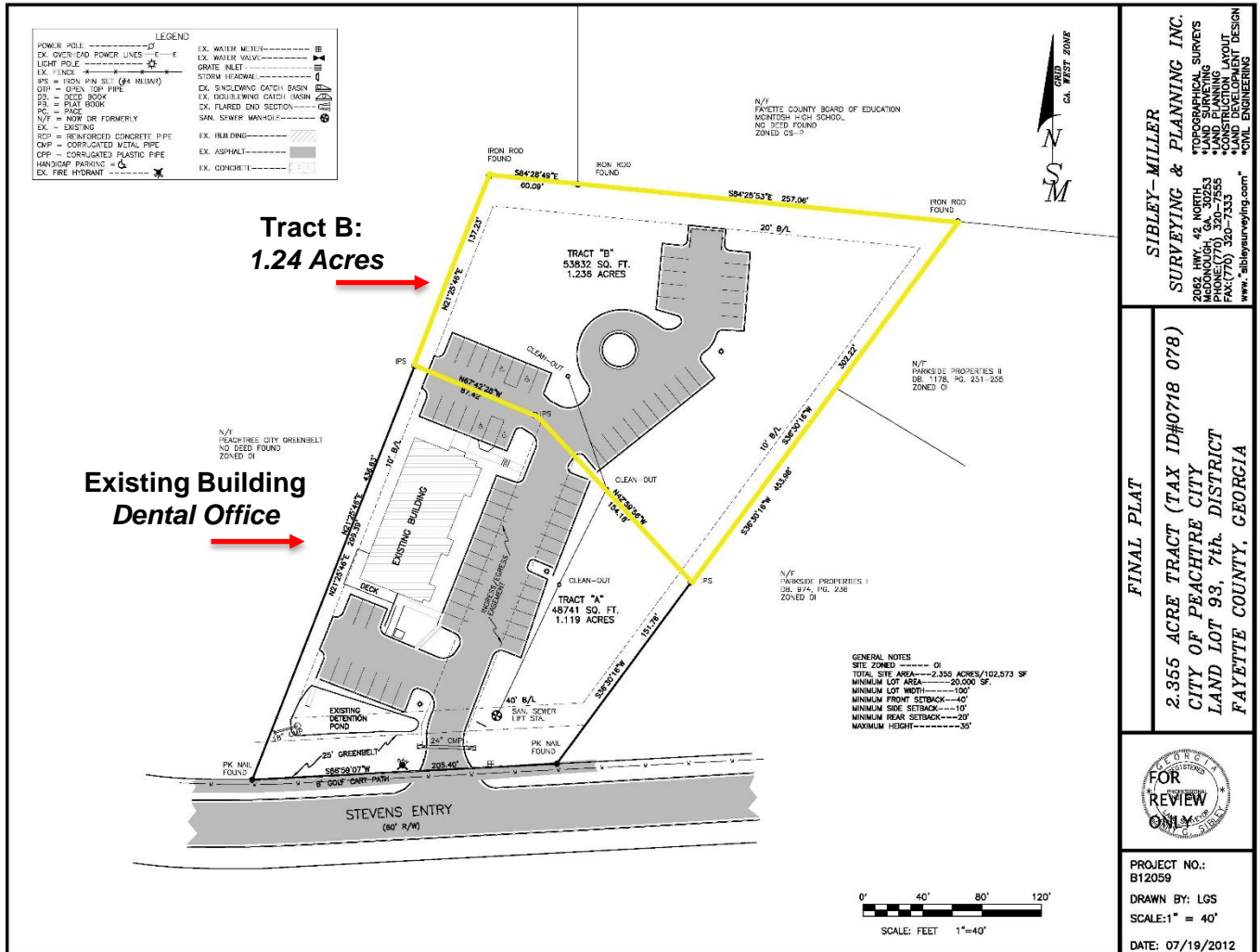
770-377-3078

dstrickland@stcom.us

201 Prospect Park, Suite A, Peachtree City, GA 30269

PLAT

510 Stevens Entry, Peachtree City, GA 30269



Office: 770-631-0499

Web: stcom.us

This information has been secured from sources we deem reliable, but we make no representations or warranties, expressed or implied as to the accuracy of the information.



SOUTHTREE
COMMERCIAL

REAL ESTATE

201 Prospect Park, Suite A, Peachtree City, GA 30269

Paul Schwinne, CCIM

Broker

678-296-1588

pschwinne@stcom.us

David A. Strickland

Associate Broker

770-377-3078

dstrickland@stcom.us

SIBLEY-MILLER
SURVEYING & PLANNING INC.
2062 HWY. 42 NORTH
PEACHTREE CITY, GA 30269
PHONE: (770) 320-5255
FAX: (770) 320-7333
www.sibleysurveying.com

FINAL PLAT

2.355 ACRE TRACT (TAX ID#0718 078)
CITY OF PEACHTREE CITY
LAND LOT 93, 7th DISTRICT
FAYETTE COUNTY, GEORGIA

PROJECT NO.:
B12059

DRAWN BY: LGS

SCALE: 1" = 40'

DATE: 07/19/2012