



SOUTHTREE
COMMERCIAL
REAL ESTATE

FOR LEASE

2201 NEWNAN CROSSING BLVD, NEWNAN, GA 30265

NEWNAN PROFESSIONAL CENTER (NPC) III



Property Details


- 40K SF Medical Office Building
- Lead Tenant is OrthoAtlanta
- 1,991 – 9,545 RSF Available
- 1st Gen Space In Shell Condition
- Across from Piedmont Newnan Hospital
- Newly Constructed and Open for Business
- Lease Rate: Please Inquire

THIS INFORMATION HAS BEEN SECURED FROM SOURCES WE DEEM RELIABLE, BUT WE MAKE NO REPRESENTATIONS OR WARRANTIES, EXPRESSED OR IMPLIED AS TO THE ACCURACY OF THE INFORMATION.

BARRY GARNER
VICE PRESIDENT
770-294-4027
BGARNER@STCOM.US

SEAN RAWSON
VICE PRESIDENT
678-920-1222
SRAWSON@STCOM.US

 STCOM.US

 770-631-0499

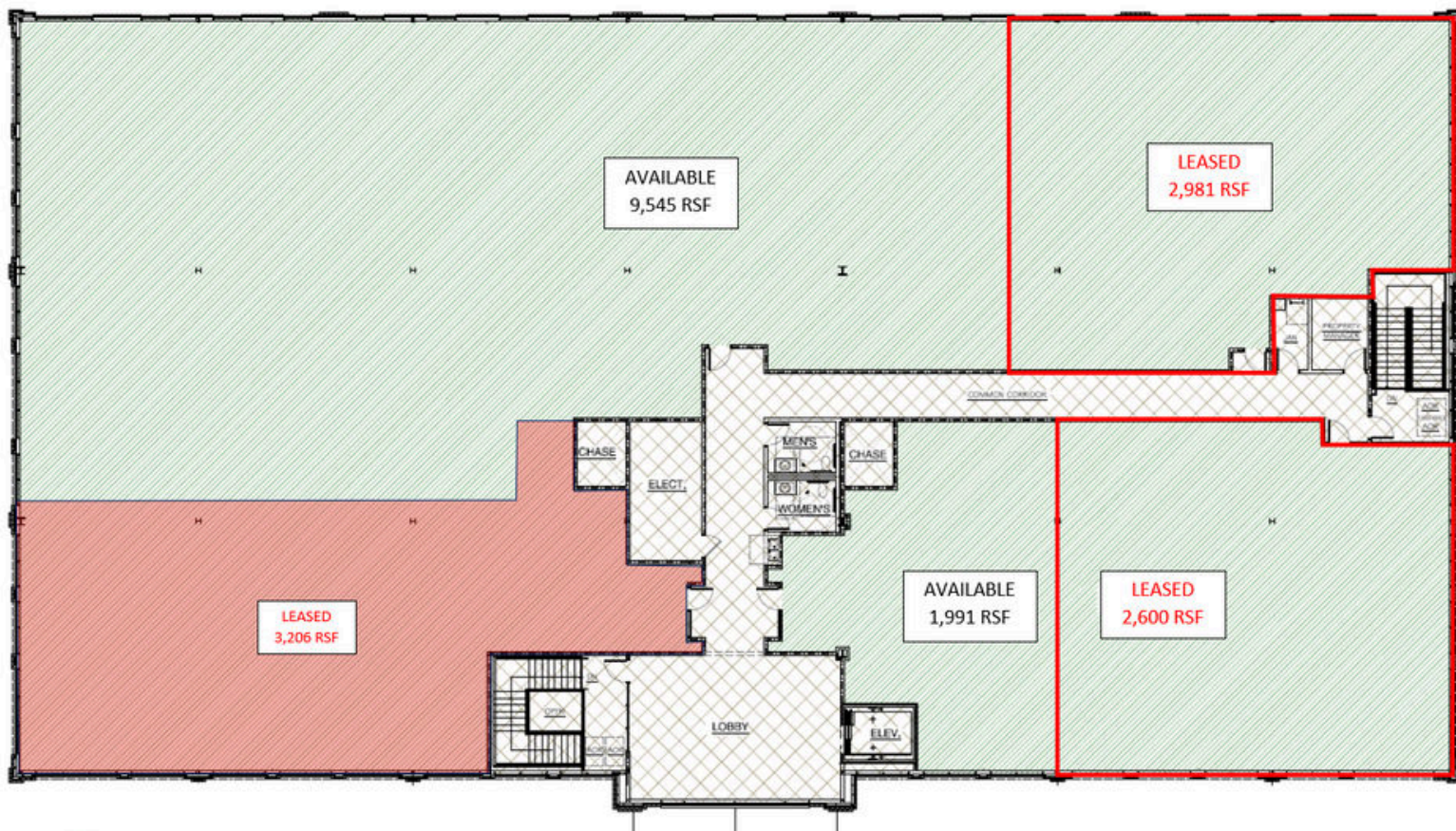
 201 PROSPECT PARK, SUITE A,
PEACHTREE CITY, GA 30269



SOUTHTREE
COMMERCIAL
REAL ESTATE

FLOOR PLAN

2201 NEWNAN CROSSING BLVD, NEWNAN, GA 30265



Southtree Commercial has developed seven other medical office buildings in this area totaling over 150,000 +/- square feet with tenants that include:

NPC I – Piedmont Internal Medicine, Piedmont Wound Care and Hyperbaric Center, Pain Care

NPC II – Resurgens Orthopaedics, DaVita Poplar Dialysis, Piedmont OB/GYN, Piedmont Pulmonary and Sleep Medicine, Caduceus USA

NPC III– Piedmont Orthopaedics | OrthoAtlanta Newnan

NCBPC – Summit Urgent Care, Advanced Aesthetics, Burson ENT, Heindel ENT, Hazelton Pharmacy

Stillwood Corners – Hopebridge Autism Therapy Center, Dream Pediatric Dentistry & Orthodontics



Area Information

- Site is located across the street from the Piedmont Newnan Hospital (PNH) campus on Poplar Road in Coweta County. PNH is a 136-bed hospital on 105 acres.
- Encompass Health Rehabilitation Hospital of Newnan opened in Late 2014. This 50-bed inpatient rehabilitation hospital is adjacent to the site.
- Cancer Treatment Centers of America (CTCA) has a 50-bed hospital on approximately 100 acres located 2 miles from the site.