



SOUTHTREE
COMMERCIAL
REAL ESTATE

FOR LEASE

1233 HIGHWAY 54, SUITE 120, FAYETTEVILLE, GA 30214

MEDICAL OFFICE SPACE | 1,955 SF AVAILABLE



Property details

- **1,955 SF Available, First Floor Suite**
- 30,000 SF +/- two story Medical Office Building
- Adjacent to Piedmont Fayette Hospital
- Minimum 5:1 Parking Ratio
- Generous Tenant Improvement Allowances
- No Hospital Restrictions
- Lease Rate: Please Inquire

THIS INFORMATION HAS BEEN SECURED FROM SOURCES WE DEEM RELIABLE, BUT WE MAKE NO REPRESENTATIONS OR WARRANTIES, EXPRESSED OR IMPLIED AS TO THE ACCURACY OF THE INFORMATION.

BARRY GARNER
VICE PRESIDENT
770-294-4027
BGARNER@STCOM.US

SEAN RAWSON
VICE PRESIDENT
678-920-1222
SRAWSON@STCOM.US

 STCOM.US

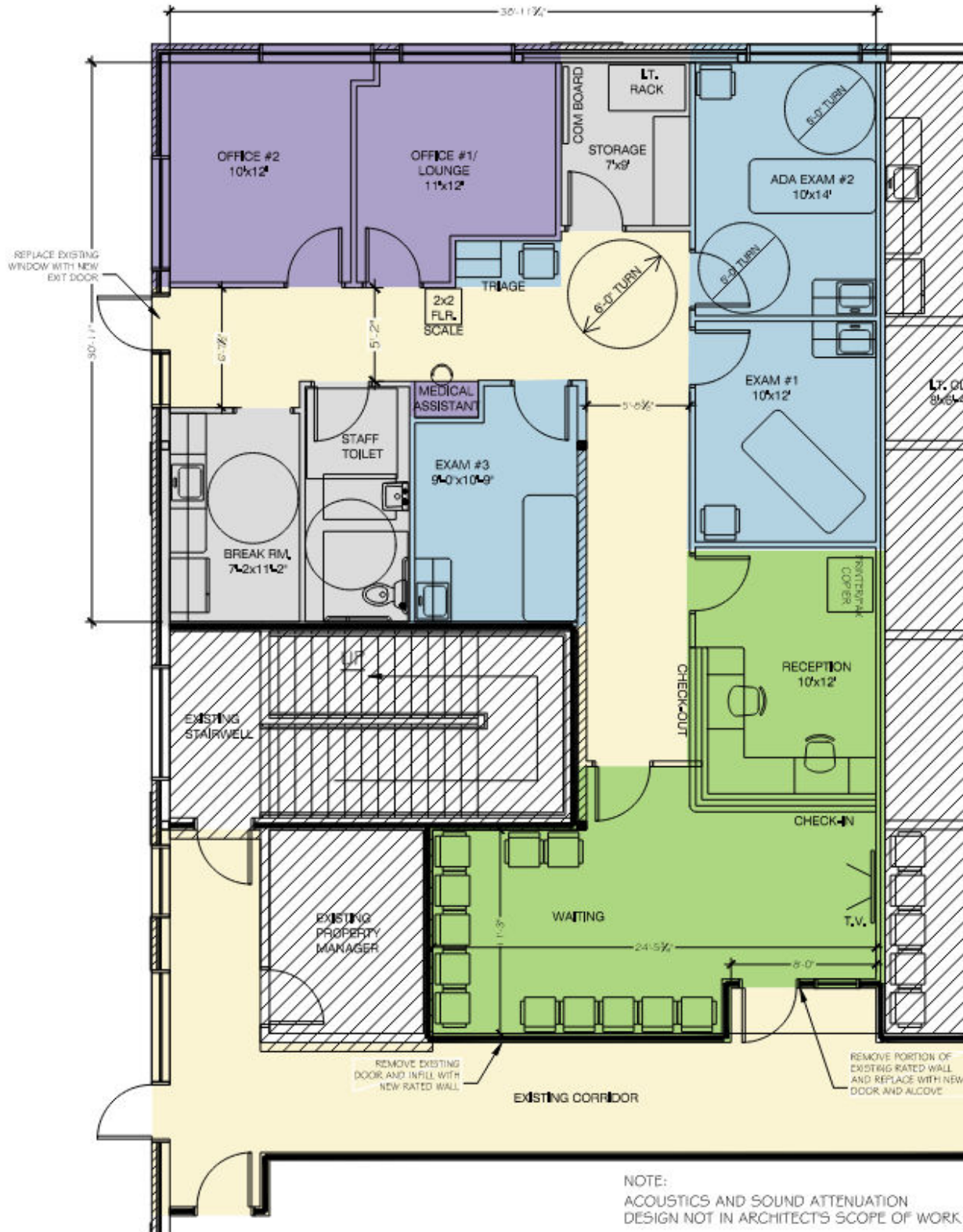
 770-631-0499

 201 PROSPECT PARK, SUITE A,
PEACHTREE CITY, GA 30269



FLOOR PLAN

1233 HIGHWAY 54, SUITE 120, FAYETTEVILLE, GA 30214





SOUTHTREE
COMMERCIAL
REAL ESTATE

AERIAL MAP

1233 HIGHWAY 54, SUITE 120, FAYETTEVILLE, GA 30214





SOUTHTREE
COMMERCIAL
REAL ESTATE

AERIAL MAP

1233 HIGHWAY 54, SUITE 120, FAYETTEVILLE, GA 30214

