

# FOR LEASE

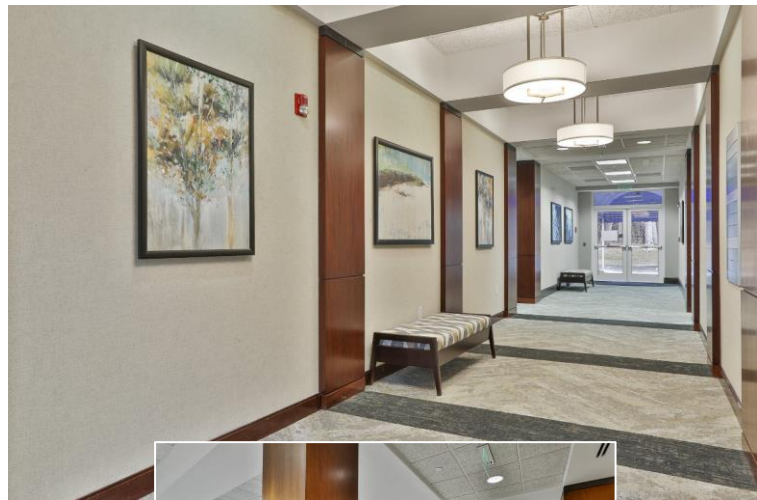
500 Westpark Drive, Peachtree City, GA 30269

**Office Space | Commerce Center**



## PROPERTY DETAILS

- Available Space: 2,500-11,000 +/- RSF
- Full Floor Opportunity Available
- Located in Westpark Office and Commercial Center in Peachtree City
- Walking distance to hotels, restaurants, banks, day care, and fitness facilities
- Convenient access to SR 54, SR 74, and I-85
- Comcast Fiber and AT&T Fiber
- Newly renovated common areas
- Lease Rate: Inquire



**Office: 770-631-0499**

**Web: [stcom.us](http://stcom.us)**

*This information has been secured from sources we deem reliable, but we make no representations or warranties, expressed or implied as to the accuracy of the information.*



**SOUTHTREE**  
COMMERCIAL

**REAL ESTATE**

**Paul Schwinne, CCIM**

Broker

678-296-1588

[pschwinne@stcom.us](mailto:pschwinne@stcom.us)

**David A. Strickland**

Associate Broker

770-377-3078

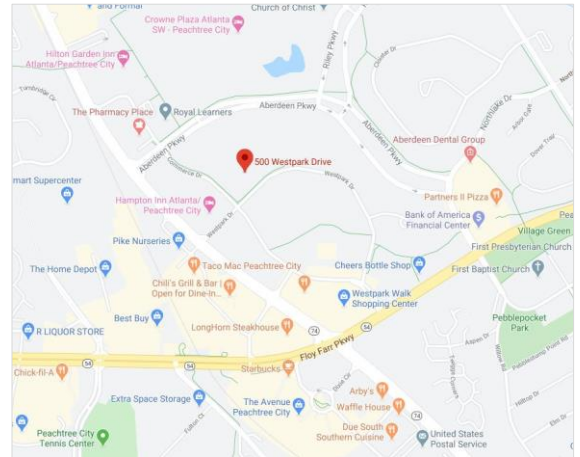
[dstrickland@stcom.us](mailto:dstrickland@stcom.us)

**201 Prospect Park, Suite A, Peachtree City, GA 30269**



# PHOTOS and MAP

500 Westpark Drive, Peachtree City, GA 30269



**Office: 770-631-0499**

**Web: [stcom.us](http://stcom.us)**

*This information has been secured from sources we deem reliable, but we make no representations or warranties, expressed or implied as to the accuracy of the information.*



**SOUTHTREE**  
COMMERCIAL

**REAL ESTATE**

**Paul Schwinne, CCIM**

Broker

678-296-1588

[pschwinne@stcom.us](mailto:pschwinne@stcom.us)

**David A. Strickland**

Associate Broker

770-377-3078

[dstrickland@stcom.us](mailto:dstrickland@stcom.us)

**201 Prospect Park, Suite A, Peachtree City, GA 30269**