

FOR SALE

510 Stevens Entry, Peachtree City, GA 30269

Tract B: 1.24 Acres | Professional Office Pad Site



Tract B: 1.24 Acres

PROPERTY DETAILS

- Pad Ready Site
- 1.24 +/- Acres
- All Utilities Available
- Master Detention
- Monument Signage
- 29 Dedicated Parking Spaces
- Golf Cart Accessible
- Price: \$249,000

Office: 770-631-0499

Web: stcom.us

This information has been secured from sources we deem reliable, but we make no representations or warranties, expressed or implied as to the accuracy of the information.



SOUTHTREE
COMMERCIAL

REAL ESTATE

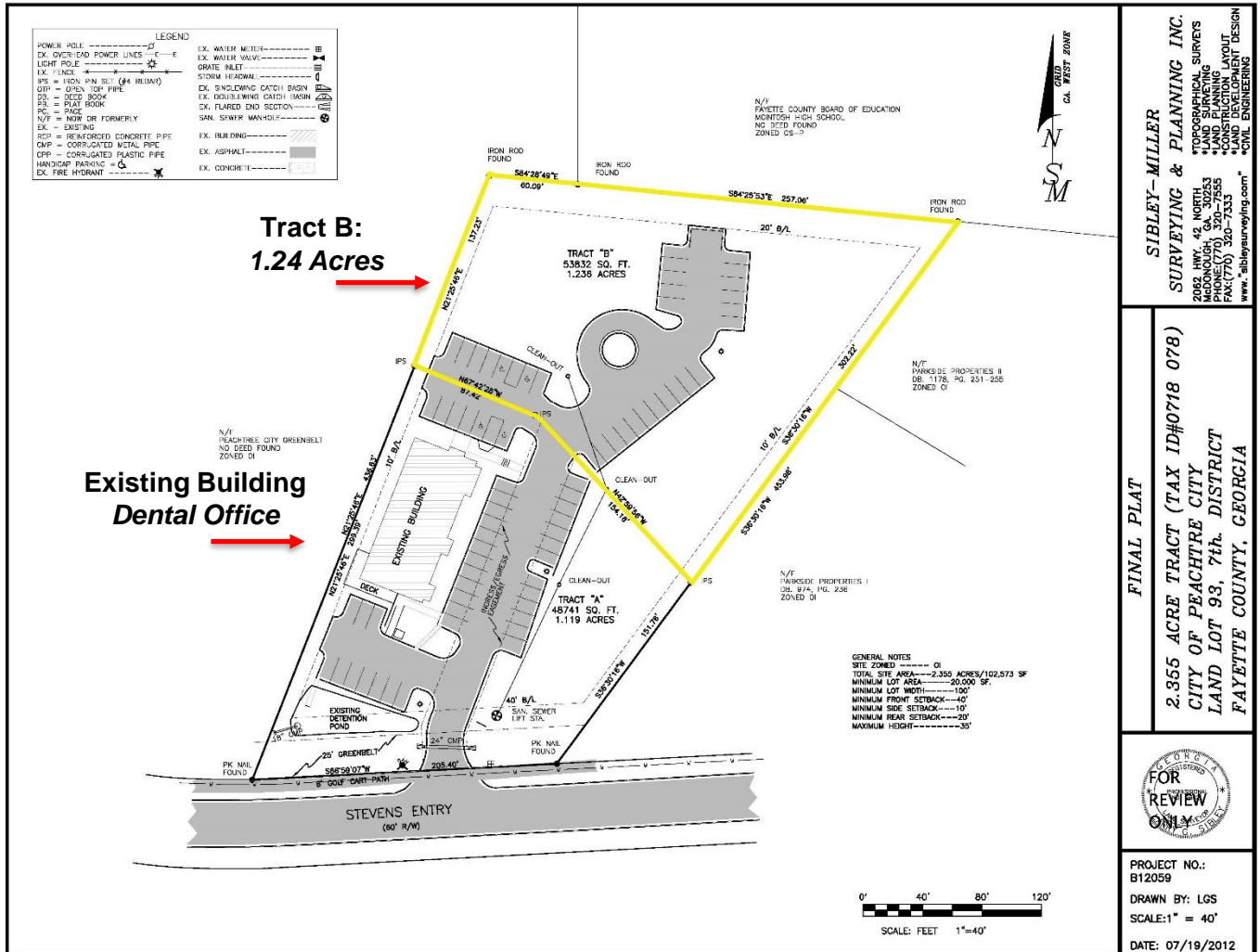
Barry Garner
Commercial Agent
770-294-4027
bgarner@stcom.us

Paul Schwinne, CCIM
Broker
678-296-1588
pschwinne@stcom.us

201 Prospect Park, Suite A, Peachtree City, GA 30269

PLAT

510 Stevens Entry, Peachtree City, GA 30269



Office: 770-631-0499
Web: stcom.us

This information has been secured from sources we deem reliable, but we make no representations or warranties, expressed or implied as to the accuracy of the information.



SOUTHTREE
COMMERCIAL

REAL ESTATE

201 Prospect Park, Suite A, Peachtree City, GA 30269

Barry Garner
Commercial Agent
770-294-4027
bgarner@stcom.us

Paul Schwinne, CCIM
Broker
678-296-1588
pschwinne@stcom.us