

FOR SALE

1665 Highway 34 East, Newnan, GA 30265

9,982 SF Medical Office Building



PROPERTY DETAILS

- 1+/- acre with a 9,982+/- SF Medical Office Building
- 3 suites include Clinical, ASC, and Administrative
- Building will be delivered 100% vacant
- Built in 2011
- 4.8 parking spaces per 1,000 SF
- Ample parking and cross easement parking with an adjacent medical office building
- Conveniently located along SR 34 with great visibility and close access to I-85
- Price: \$2,900,000

Office: 770-631-0499

Web: stcom.us

This information has been secured from sources we deem reliable, but we make no representations or warranties, expressed or implied as to the accuracy of the information.



SOUTHTREE
COMMERCIAL

REAL ESTATE

201 Prospect Park, Suite A, Peachtree City, GA 30269

Distance to Site (Miles)

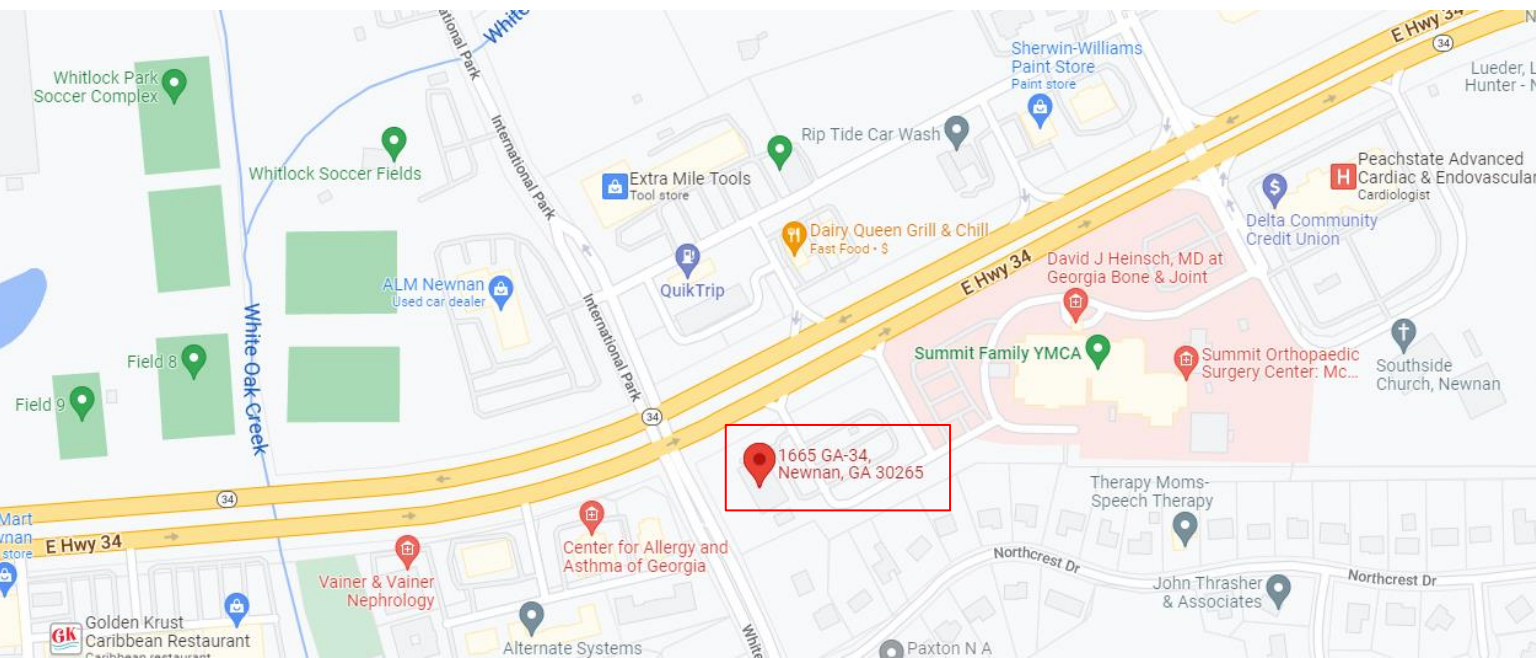
I-85	1.4
Piedmont Newnan Hospital	4.2
Piedmont Fayette Hospital	14.8

Barry Garner
Commercial Agent
770-294-4027
bgarner@stcom.us

Paul Schwinne, CCIM
Broker
678-296-1588
pschwinne@stcom.us

MAP

1665 Highway 34 East, Newnan, GA 30265



Office: 770-631-0499

Web: stcom.us

This information has been secured from sources we deem reliable, but we make no representations or warranties, expressed or implied as to the accuracy of the information.



SOUTHTREE
COMMERCIAL

REAL ESTATE

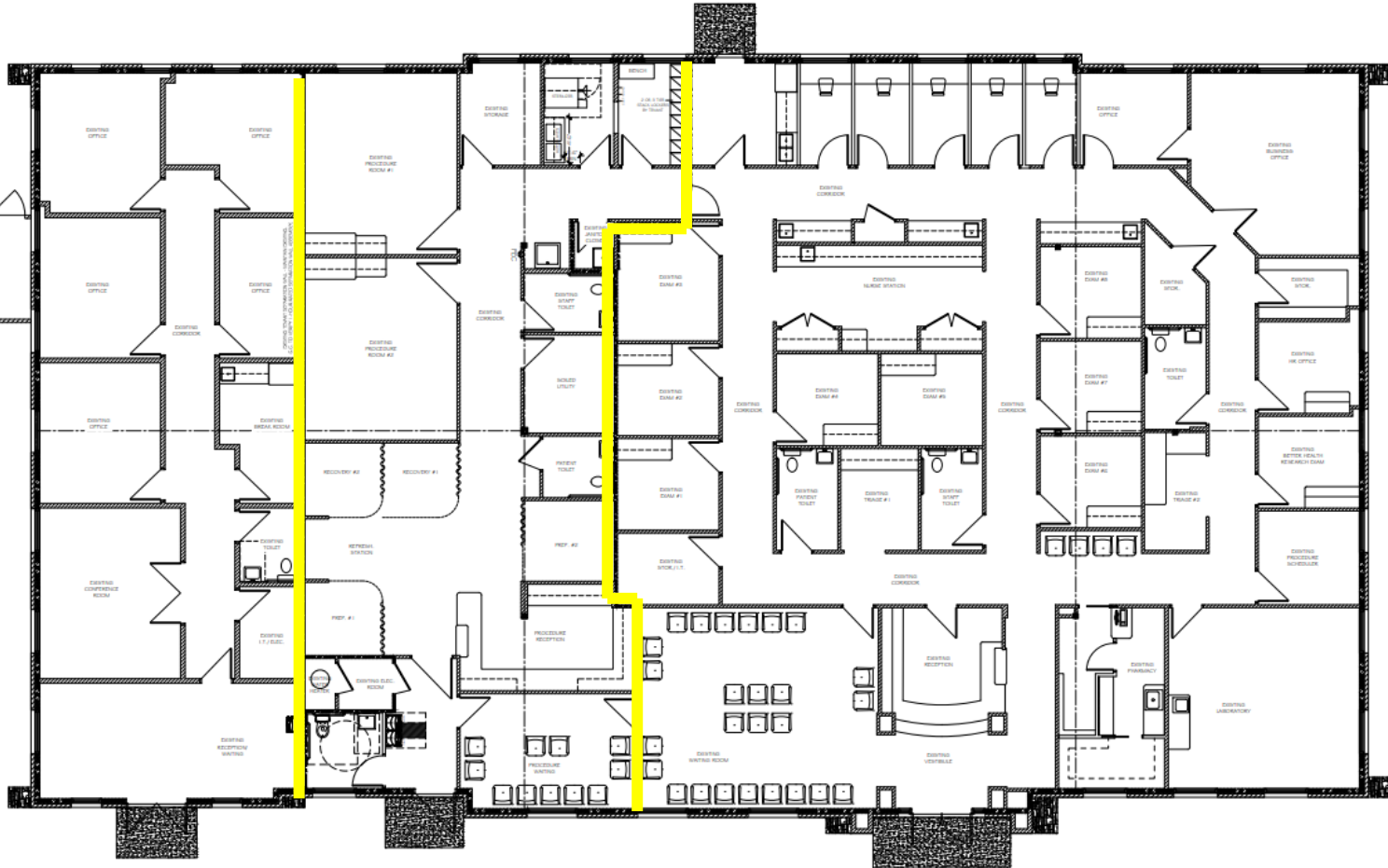
201 Prospect Park, Suite A, Peachtree City, GA 30269

Barry Garner
Commercial Agent
770-294-4027
bgarner@stcom.us

Paul Schwinne, CCIM
Broker
678-296-1588
pschwinne@stcom.us

FLOOR PLAN

1665 Highway 34 East, Newnan, GA 30265



Office: 770-631-0499

Web: stcom.us

This information has been secured from sources we deem reliable, but we make no representations or warranties, expressed or implied as to the accuracy of the information.



SOUTHTREE
COMMERCIAL

REAL ESTATE

Barry Garner
Commercial Agent
770-294-4027
bgarner@stcom.us

Paul Schwinne, CCIM
Broker
678-296-1588
pschwinne@stcom.us

201 Prospect Park, Suite A, Peachtree City, GA 30269