

FOR SALE

Hwy 154 & Lower Fayetteville Rd, Sharpsburg, GA 30277

1.78 Acres | Zoned "Old C" General Commercial



PROPERTY DETAILS

- 1.78 Acres Zoned "Old C" General Commercial in Coweta County
- Utilities on site excluding sewer
- 5 miles from I-85 Exit 51
- Parcel Number: 122 6067 013
- Price: \$585,000

GDOT ANNUAL AVERAGE DAILY TRAFFIC COUNTS FOR 2021

- Hwy 154: 14,600 (Actual)
- Lower Fayetteville Rd: 9,980 (Estimated)

Office: 770-631-0499

Web: stcom.us

This information has been secured from sources we deem reliable, but we make no representations or warranties, expressed or implied as to the accuracy of the information.



SOUTHTREE
COMMERCIAL

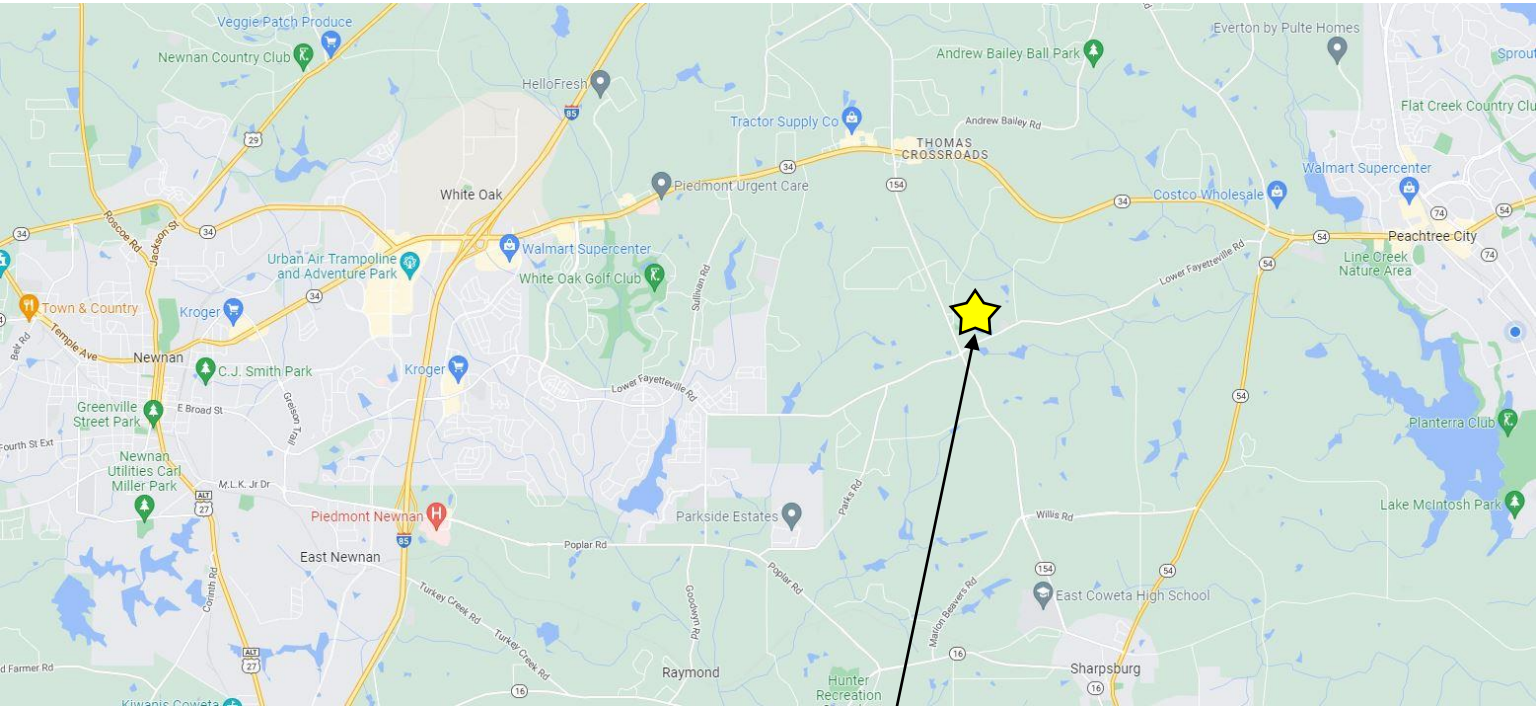
REAL ESTATE

Eric Smith
Commercial Realtor
770-527-4380
esmith@stcom.us

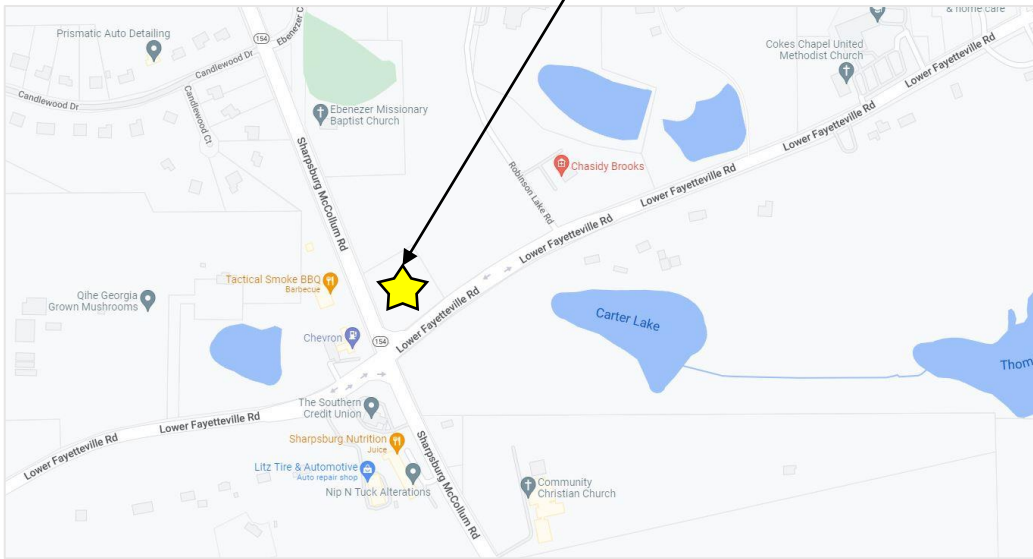
201 Prospect Park, Suite A, Peachtree City, GA 30269

MAPS

Hwy 154 & Lower Fayetteville Rd, Sharpsburg, GA 30277



Site



Office: 770-631-0499

Web: stcom.us

This information has been secured from sources we deem reliable, but we make no representations or warranties, expressed or implied as to the accuracy of the information.



SOUTHTREE
COMMERCIAL

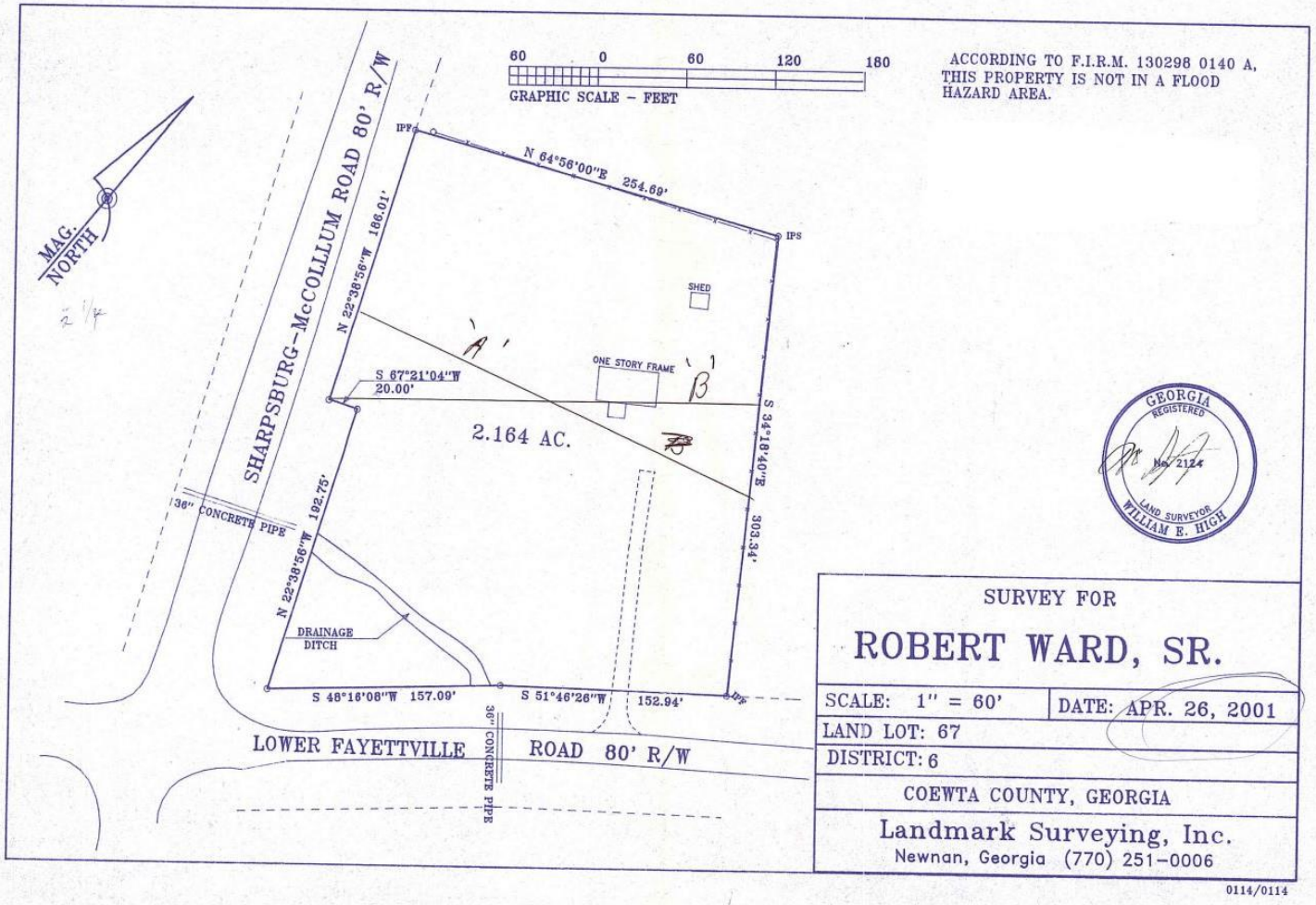
REAL ESTATE

Eric Smith
Commercial Realtor
770-527-4380
esmith@stcom.us

201 Prospect Park, Suite A, Peachtree City, GA 30269

SURVEY

Hwy 154 & Lower Fayetteville Rd, Sharpsburg, GA 30277



Office: 770-631-0499

Web: stcom.us

This information has been secured from sources we deem reliable, but we make no representations or warranties, expressed or implied as to the accuracy of the information.



SOUTHTREE
COMMERCIAL

REAL ESTATE

201 Prospect Park, Suite A, Peachtree City, GA 30269

Eric Smith
Commercial Realtor
770-527-4380
esmith@stcom.us