

FOR LEASE

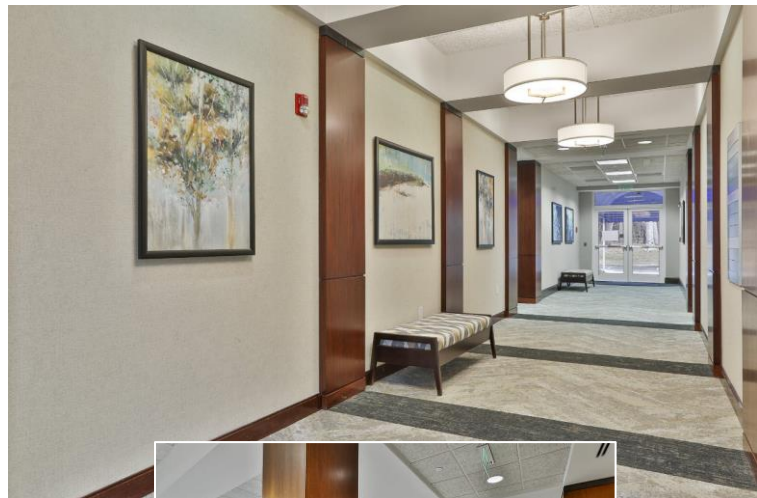
500 Westpark Drive, Peachtree City, GA 30269

Office Space | Commerce Center



PROPERTY DETAILS

- Available Suites: 5,440 & 11,000+/- RSF
- Full Floor Opportunity Available
- Located in Westpark Office and Commercial Center in Peachtree City
- Walking distance to hotels, restaurants, banks, daycare, and fitness facilities
- Convenient access to SR 54, SR 74, and I-85
- Comcast Fiber and AT&T Fiber
- Newly renovated common areas
- Lease Rate: Inquire



Office: 770-631-0499

Web: stcom.us

This information has been secured from sources we deem reliable, but we make no representations or warranties, expressed or implied as to the accuracy of the information.



SOUTHTREE
COMMERCIAL

REAL ESTATE

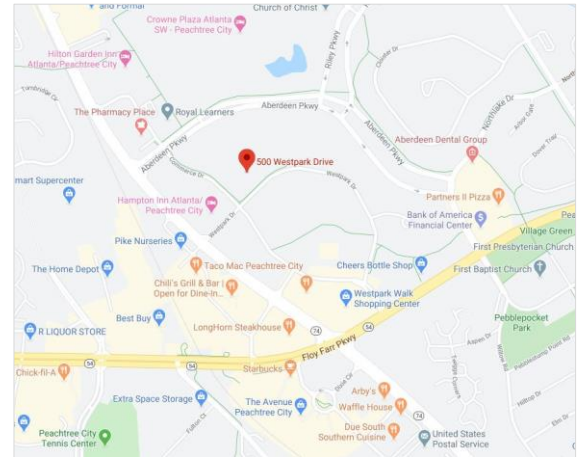
Barry Garner
Commercial Agent
770-294-4027
bgarner@stcom.us

Paul Schwinne, CCIM
Broker
678-296-1588
pschwinne@stcom.us

201 Prospect Park, Suite A, Peachtree City, GA 30269

PHOTOS and MAP

500 Westpark Drive, Peachtree City, GA 30269



Office: 770-631-0499

Web: stcom.us

This information has been secured from sources we deem reliable, but we make no representations or warranties, expressed or implied as to the accuracy of the information.



SOUTHTREE
COMMERCIAL

REAL ESTATE

Barry Garner
Commercial Agent
770-294-4027
bgarner@stcom.us

Paul Schwinne, CCIM
Broker
678-296-1588
pschwinne@stcom.us

201 Prospect Park, Suite A, Peachtree City, GA 30269