



SOUTHTREE
COMMERCIAL

REAL ESTATE

FOR LEASE

105 GREENCASTLE ROAD, TYRONE, GA



PROPERTY DETAILS

- Available Suite:
 - Suite C – 3,393 +/- RSF on 2nd Floor
 - Base Rent - \$16.00 PSF NNN
 - OPEX - \$4.25 PSF, includes water
- Situated at the front of the quiet Market Hill Office Park
- Conveniently located just north of Peachtree City in Tyrone
- Minutes from Kedron Shopping Center (countless amenities)
- 10-minute Drive to Town of Trilith and Trilith Studios
- Convenient access to SR 74 and I-85
- Co-Tenants:
 - Art of Life Chiropractic
 - Healthpoint Pediatrics

THIS INFORMATION HAS BEEN SECURED FROM SOURCES WE DEEM RELIABLE, BUT WE MAKE NO REPRESENTATIONS OR WARRANTIES, EXPRESSED OR IMPLIED AS TO THE ACCURACY OF THE INFORMATION.

BARRY GARNER
VICE PRESIDENT
770-294-4027
BGARNER@STCOM.US

SEAN RAWSON
VICE PRESIDENT
678-920-1222
SRAWSON@STCOM.US

 STCOM.US

 770-631-0499

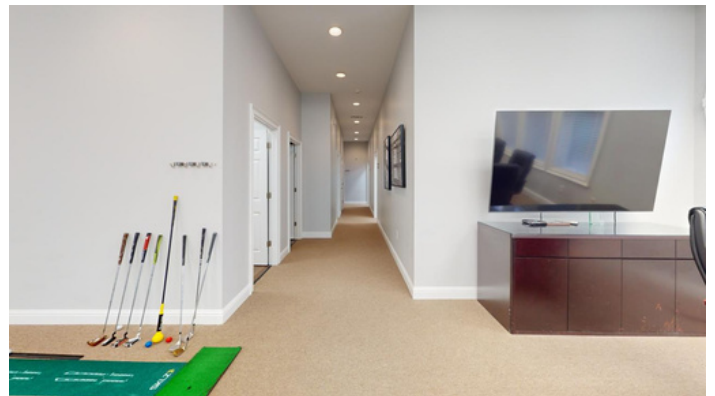
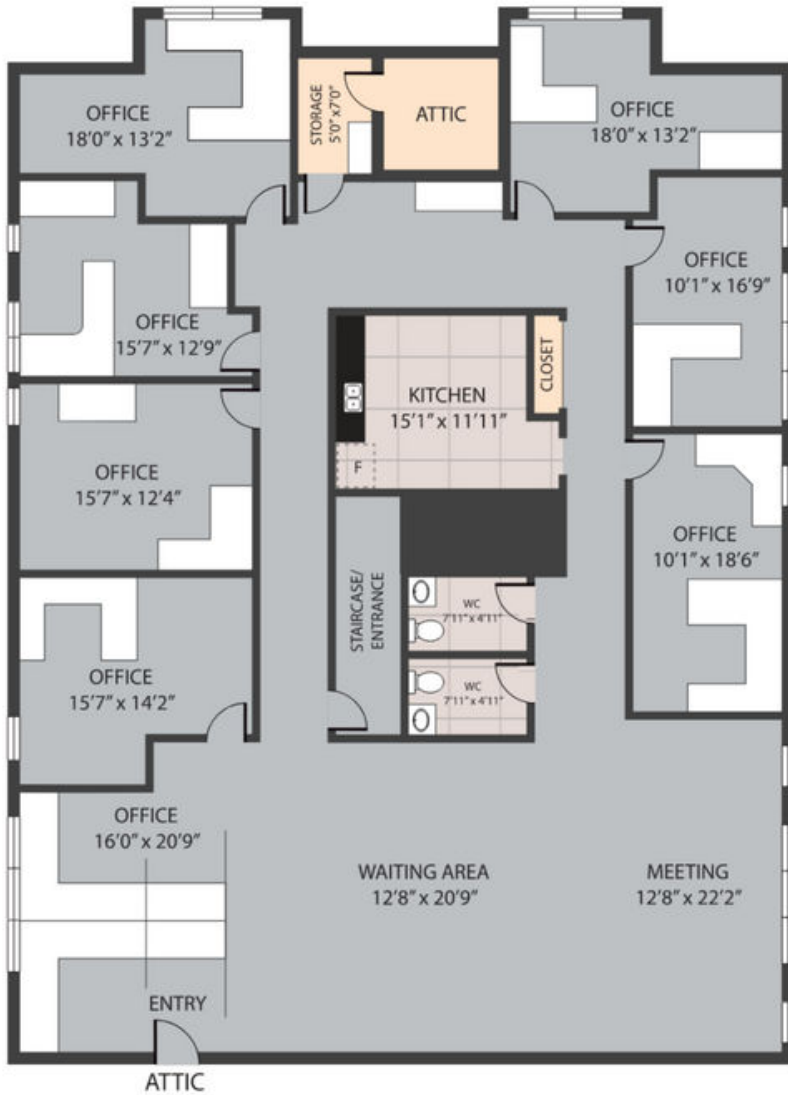
 201 PROSPECT PARK, SUITE A,
PEACHTREE CITY, GA 30269



SOUTHTREE
COMMERCIAL
REAL ESTATE

FLOOR PLAN

105 GREENCASTLE ROAD, TYRONE, GA



SUITE HIGHLIGHTS

- 7 Private Offices
- Large open area for Waiting Room, Meeting Room, and/or Cubicle space
- Kitchen/Breakroom
- 2 Private Restrooms
- IT Room with additional storage area



SOUTHTREE
COMMERCIAL
REAL ESTATE

AERIAL MAP

105 GREENCASTLE ROAD, TYRONE, GA

