

**FOR  
SALE**



**BARRY GARNER**  
VICE PRESIDENT  
770-294-4027  
BGARNER@STCOM.US

**SEAN RAWSON**  
VICE PRESIDENT  
678-920-1222  
SRAWSON@STCOM.US





# SOUTHTREE

REAL ESTATE

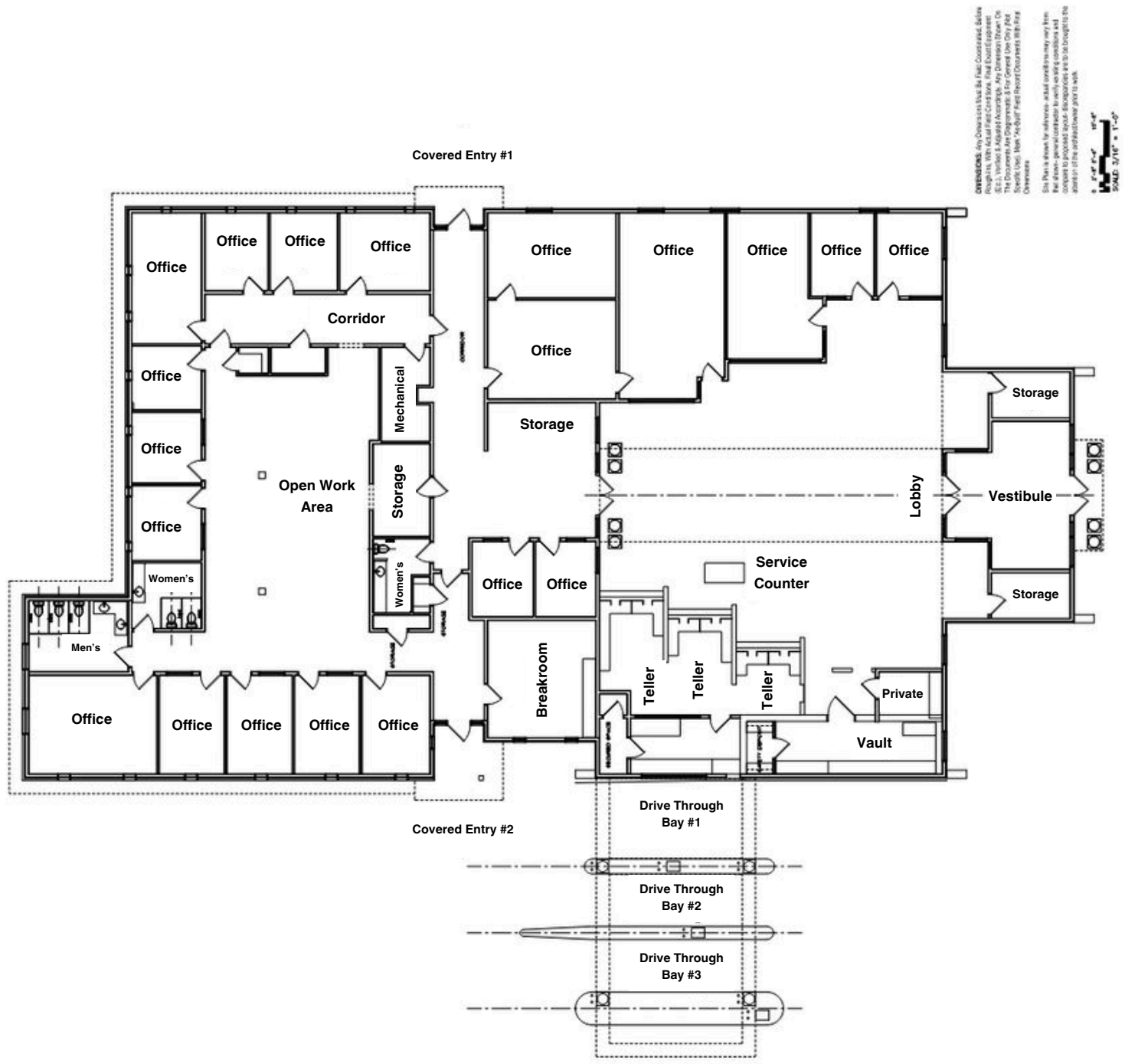
## FOR SALE - FORMER BANK BUILDING

675 N JEFF DAVIS DRIVE, FAYETTEVILLE, GA 30214

### PROPERTY DETAILS

- » **For Sale or Lease**
- » **Address:** 675 N Jeff Davis Drive
- » **City:** Fayetteville
- » **County:** Fayette
- » **Traffic Counts:**  
Hwy 85 - 33,000 VPD,  
N Jeff Davis 14,400 VPD
- » **Building SF:** 12,383 SF
- » **Parcel Size:** 3.00 Acres
- » **Zoning:** Gateway Commercial (DMU-GC)  
[UDO Zoning Details](#)
- » **Proposed Uses:** Retail, Office, Medical
- » **Former BB&T Bank**
- » **Year Built:** 1985
- » **Sale Price:** Please Inquire





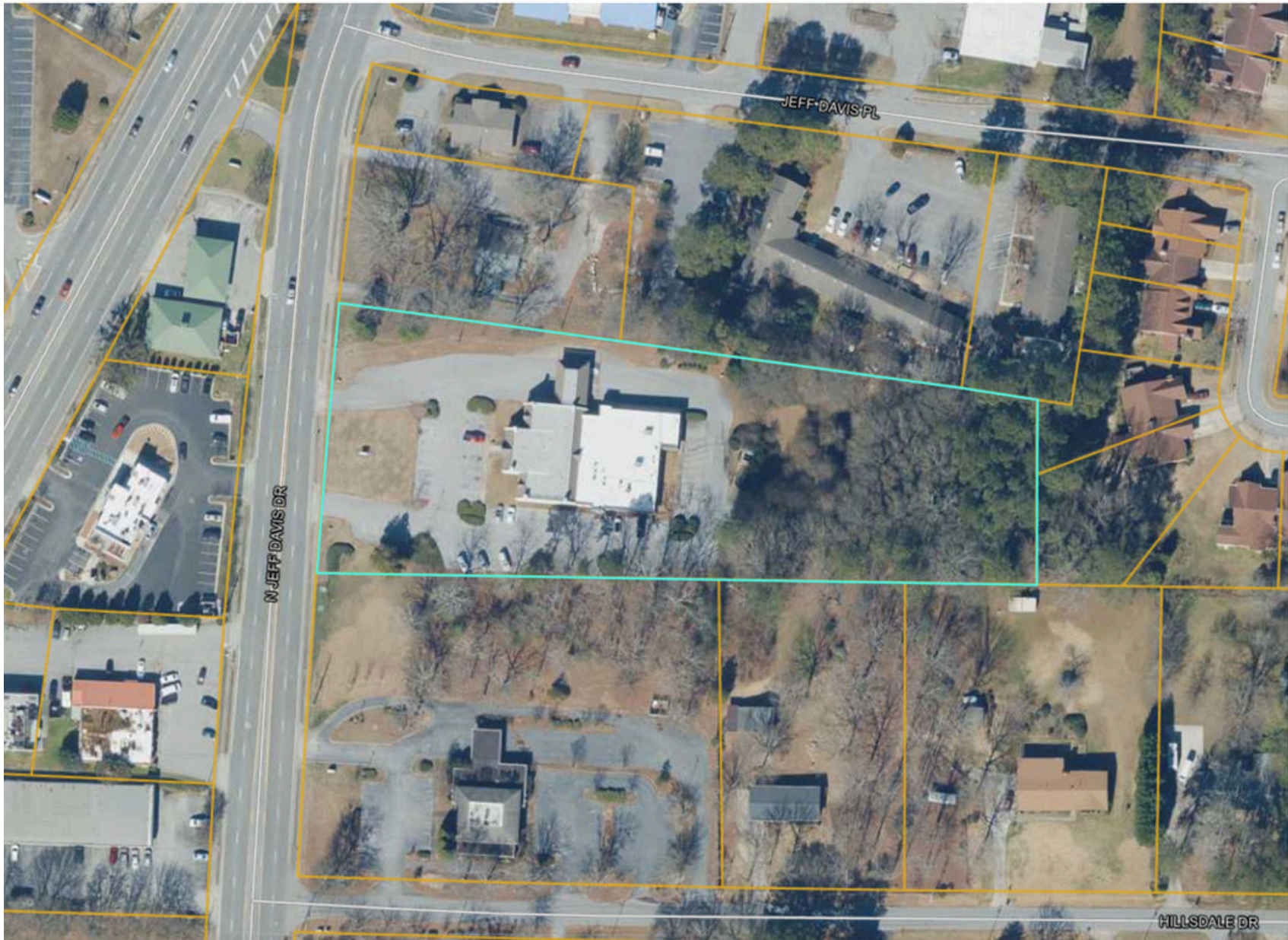
















# SOUTHTREE

REAL ESTATE

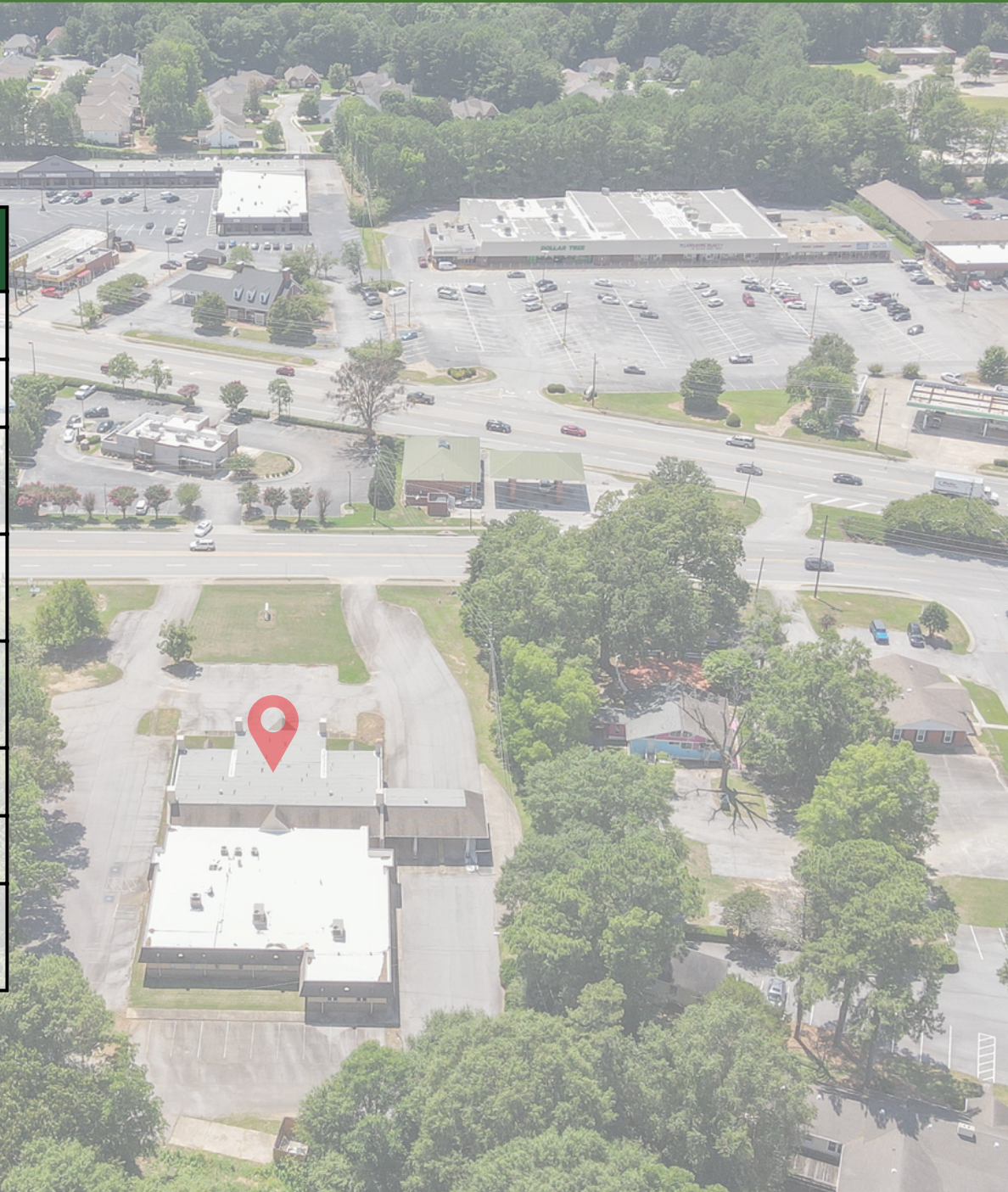
## FOR SALE - FORMER BANK BUILDING

675 N JEFF DAVIS DRIVE, FAYETTEVILLE, GA 30214





Demographics	1 Mile	3 Mile	5 Mile
2010 Population	4,523	23,706	64,858
2023 Population	5,182	27,280	73,855
2028 Population Projection	5,476	28,847	77,121
Average Household Income	\$78,576	\$92,304	\$92,509
Median Household Income	\$64,986	\$73,941	\$73,030
2010 Households	1,812	8,955	23,000
2023 Households	2,073	10,342	26,274
2028 Household Projection	2,190	10,942	27,467







# SOUTHTREE

REAL ESTATE

## FOR SALE - FORMER BANK BUILDING

675 N JEFF DAVIS DRIVE, FAYETTEVILLE, GA 30214



Fayette Pavilion



Hwy 85 - 33,000 VPD

N Jeff Davis - 14,400 VPD





# SOUTHTREE

REAL ESTATE

## FOR SALE - FORMER BANK BUILDING

675 N JEFF DAVIS DRIVE, FAYETTEVILLE, GA 30214



Downtown Fayetteville



N Jeff Davis - 14,400 VPD

Hwy 85 - 33,000 VPD





**OUR TEAM LOOKS FORWARD TO WORKING WITH YOU**

**SEAN RAWSON**  
VICE PRESIDENT  
678-920-1222  
SRAWSON@STCOM.US

**BARRY GARNER**  
VICE PRESIDENT  
770-294-4027  
BGARNER@STCOM.US